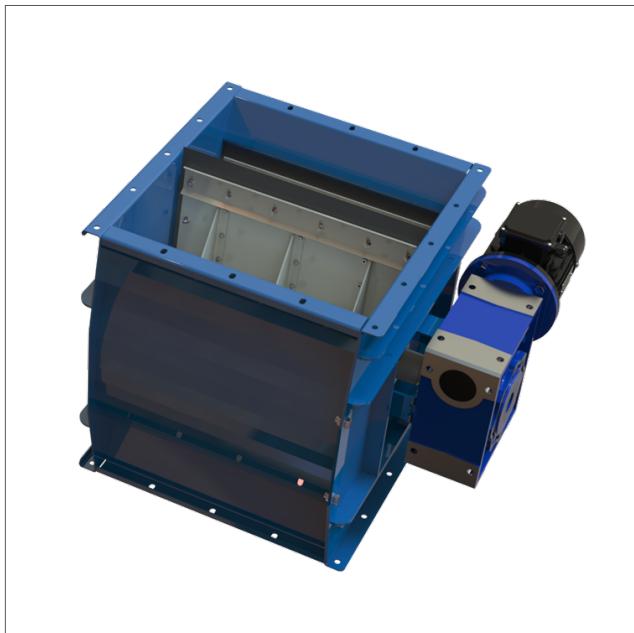




## RVLB - Rotary valve

Rotorslussar



Rotary valve - RVLB

These rotary valve are designed to discharge of waste or filtered material from a production process.

Equipped with a rotor and rubber blades, it effectively separates the material while ensuring airtightness.

Most often used under filters and cyclones, it can also be placed under silos and other storage equipment.

Geared motor details

The off-axis construction offers a reliable and robust construction for heavy duty applications.

The right-angle geared motor assembly offers a more compact installation space compared to traditional in line geared motor conceptions.

Art.nr	Motor kW	Vikt (kg)
RVLB-500	1.1	179