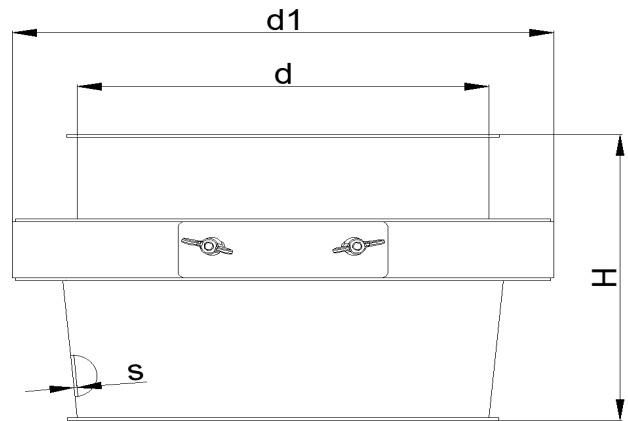
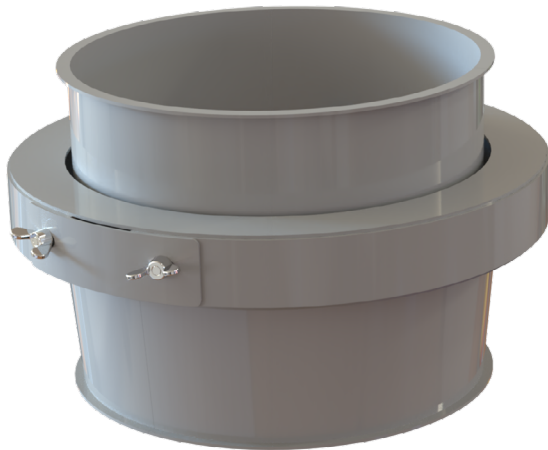




BSSP - Swivel pipe

Black steel - Pull ring edge

These pipes are composed of one pipe inserted in another and held in place on bearings. Designed to be used in situations where a lot of movement is required. Lower pipe can rotate freely by 360 degrees. Made from 2mm black steel, rolled full welded sheets with edges of 6mm for lock rings.



Diameter	Diameter	Thickness	Height	Weight
Ød, mm	Ød1, mm	s, mm	H, mm	kg
200	280	2	205	4,1
250	334	2	205	5,1
300	384	2	205	6